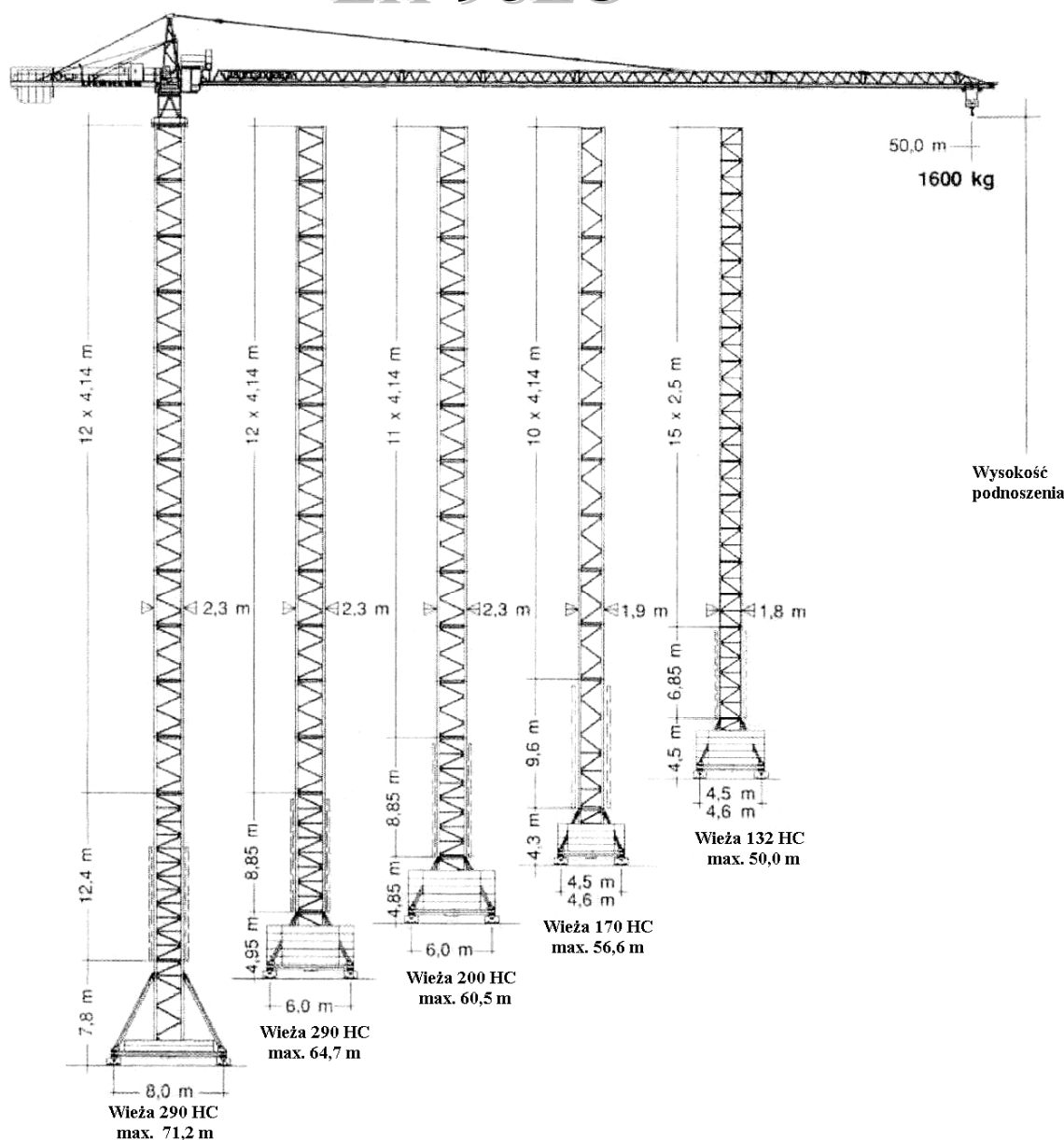


LIEBHERR

TADEX - ŻURAWIE

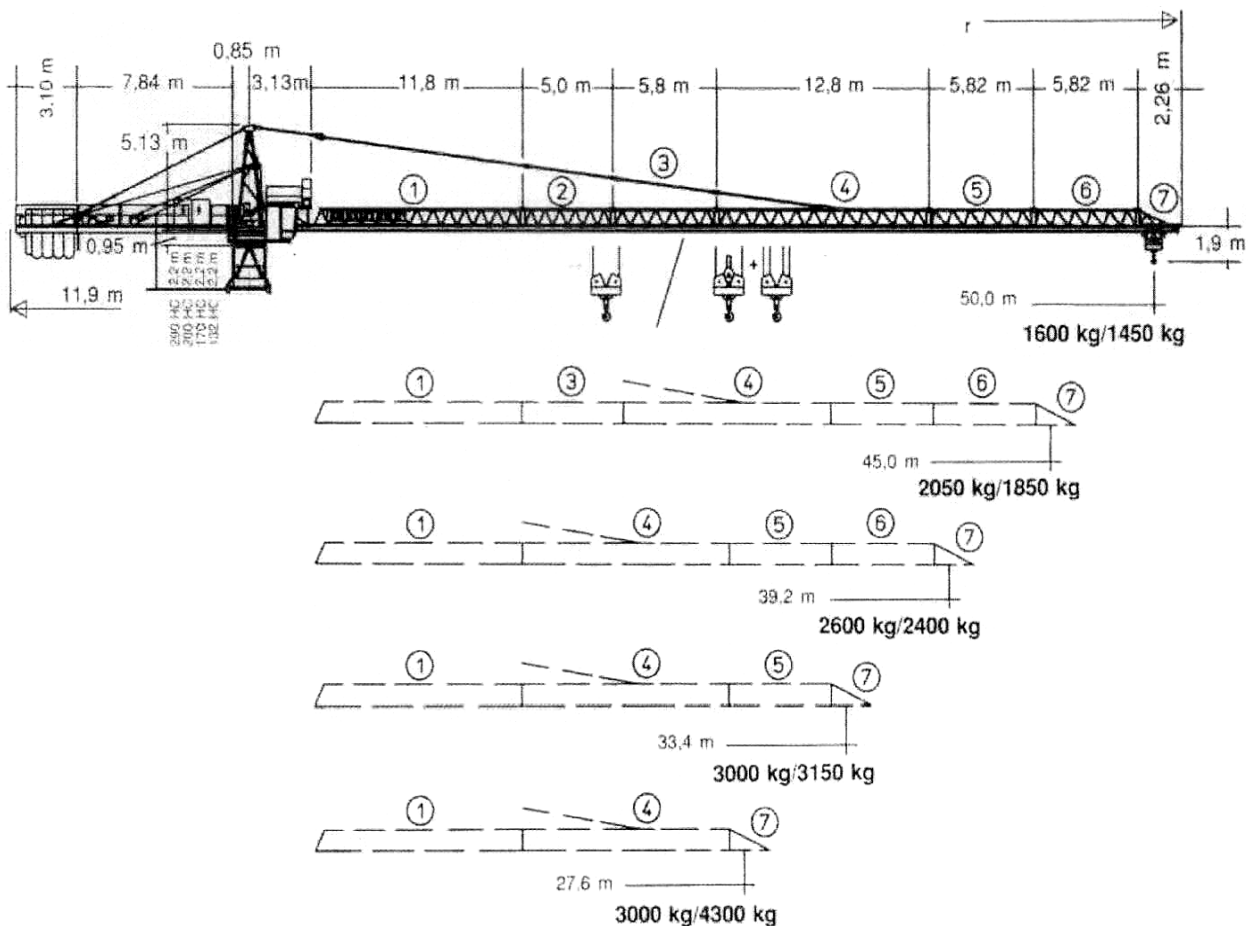
62-030 LUBOŃ - POZNAŃ, ul. Romana Maya 1
tel. / fax +48 61 89 00 484, kom. +48 601 149 358
www.dzwigi-budowlane.pl ,tadex@tadex.strefa.pl

ŻURAW WIEŻOWY LH-98EC



TADEX-ŻURAWIE , 62-030 LUBOŃ, ul. Romana Maya 1 , NIP:666-120-48-14
Regon:634298030 , www.dzwigi-budowlane.pl , tadex@tadex.strefa.pl
tel/fax +48 061 8900484 , kom. +48 0601 149 358





Z wieżą	290 HC		200 HC		170 HC	
Podstawa wieży + element wieży						
0	m	14,0	21,5	m	10,4	15,1
1		18,2	25,7		14,5	19,2
2		22,3	29,8		18,7	23,4
3		26,5	34,0		22,8	27,5
4		30,6	38,1		26,9	31,6
5		34,7	42,2		31,1	35,8
6		38,9	46,4		35,2	39,9
7		43,0	50,5		39,4	44,1
8		47,2	54,7		43,5	48,2
9		51,3	58,8		47,6	52,3
10		55,4	62,9		51,8	56,5
11		59,6	67,1		55,9	60,6
12		63,7	71,2'		60,1'	64,7'
13		67,9'	-		-	-
Promień		18,0 m			12,5 m	
					12,0 m	
					8,5 m	



Z wieżą	132 HC						
Podstawa wieży + element wieży							
0	12,5	12,0	8,2	9,7	9,5	9,5	9,2
1	15,0	14,5	10,7	12,2	12,0	12,0	11,7
2	17,5	17,0	13,2	14,7	14,5	14,5	14,2
3	20,0	19,5	15,7	17,2	17,0	17,0	16,7
4	22,5	22,0	18,2	19,7	19,5	19,5	19,2
5	25,0	24,5	20,7	22,2	22,0	22,0	21,7
6	27,5	27,0	23,2	24,7	24,5	24,5	24,2
7	30,0	29,5	25,7	27,2	27,0	27,0	26,7
8	32,5	32,0	28,2	29,7	29,5	29,5	29,2
9	35,0	34,5	30,7	32,2	32,0	32,0	31,7
10	37,5	37,0	33,2	34,7	34,5	34,5	34,2
11	40,0	39,5	35,7	37,2	37,0	37,0	36,7
12	42,5	42,0	38,2	39,7	39,5	39,5	39,2
13	45,0	44,5	40,7	42,2	42,0	42,0	-
14	47,5	47,0	43,2	44,7	44,5	44,5	-
15	50,0	49,5	45,7	47,2	47,0	47,0	-
16	-	-	48,2	-	-	-	-




Tabela Udźwignów:





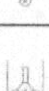









Wysięgnik		max. kg	m/kg																
m	r	m/kg					27,6	30,0	33,4	36,0	39,2	42,0	45,0	48,0	50,0				
50,0	(r = 51,5)	2,4-30,5 3000					3000	3000	2680	2440	2190	2010	1840	1690	1500				
45,0	(r = 46,5)	2,4-33,2 3000					3000	3000	2970	2710	2440	2240	2050						
39,2	(r = 40,7)	2,4-34,9 3000					3000	3000	3000	2890	2600								
33,4	(r = 34,9)	2,4-33,4 3000					3000	3000	3000										
27,6	(r = 29,1)	2,4-27,6 3000					3000												
m	r	m/kg					18,0	20,0	22,0	24,0	27,6	30,0	33,4	36,0	39,2	42,0	45,0	48,0	50,0
50,0	(r = 51,5)	2,4-28,4 3000	2,4-16,2 6000	5260	4620	4110	3690	3110	2800	2450	2230	2000	1830	1670	1530	1450			
45,0	(r = 46,5)	2,4-30,7 3000	2,4-17,4 6000	5750	5060	4500	4050	3410	3080	2700	2460	2210	2020	1850					
39,2	(r = 40,7)	2,4-32,7 3000	2,4-18,5 6000	6000	5460	4860	4380	3690	3340	2930	2670	2400							
33,4	(r = 34,9)	2,4-33,4 3000	2,4-19,6 6000	6000	5850	5220	4700	3970	3590	3150									
27,6	(r = 29,1)	2,4-27,6 3000	2,4-20,9 6000	6000	6000	5640	5080	4300											

Udźwig	Promień
6000	18,0
5000	27,6
4000	33,4
3000	39,2
2000	45,0
1000	50,0
0	



Prędkość

	U/min 0,85 sl./min tr./min	5,0 kW
	8,0 / 29,1 / 54,0 m/min	3,0 kW
	25,0 m/min	2 x 3,0 kW (132 HC) 2 x 7,5 kW (290 HC) (200 HC, 170 HC)
Anschlußwerte Kranoberteil Power requirement, upper part Puissance requise, partie supérieure		Hubwerk Hoist gear Mécanisme de levage
		22 kW 26 kW 34 kW
kW		30,0 34,0 42,0
kVA		40,0 35,0 42,0

Hubwerk Hoist gear Mécanisme de levage	Stufe Step Cran	kg	m/min
22,0 / 18,0 / 4,0 kW, KL, Hubhöhe mit LS-Trommel (4 Lagen) 60,0 m Hoisting height with LS-drum (4 layers) Hauteur sous crochet avec enrouleur LS (4 couches)	1	 3000	7,6
	2	 3000	35,3
	3	 1700	70,0
	1	 6000	3,9
	2	 6000	17,6
	3	 3400	35,0
26,0 / 23,0 kW, SL + WSB Hubhöhe mit LS-Trommel (4 Lagen) 60,0 m Hoisting height with LS-drum (4 layers) Hauteur sous crochet avec enrouleur LS (4 couches)	1	 3000	3,5 / 35,3
	2	 1700	71,0
	1	 6000	1,7 / 17,7
	2	 3400	35,5
	1	 4000	4,4 / 44,0
	2	 1620	88,0
34,0 / 30,0 kW, SL + WSB Hubhöhe mit LS-Trommel (4 Lagen) 60,0 m Hoisting height with LS-drum (4 layers) Hauteur sous crochet avec enrouleur LS (4 couches)	1	 6000	2,2 / 22,0
	2	 3540	44,0

